



Re-live and share your viewing experience in HD
Visit: 19-111SalernoSt.com



'PRIME ISLE OF CAPRI INVESTMENT'



2  1  1   169m²



Property Overview

'PRIME ISLE OF CAPRI INVESTMENT'

Situated on a nearly 3-acre site in the heart of Isle of Capri; there are few properties that are better positioned, more competitively priced or with greater potential.

Villa 19 is an absolute gem! Flaunting cathedral ceilings and an open plan living area that seamlessly integrates with your private, outdoor patio. Equipped with a large kitchen, separate laundry, two spacious bedrooms and a two-way bathroom this property has a functional flow.

Plus, with a resort-style pool and BBQ area, lifestyle and leisure are built-in.

Walk three-minutes either direction to Capri on Via Roma and Sorrento Shopping Village or drive five-minutes to the golden sands of the Gold Coast's world-renowned beaches.

This exclusive offering is one of just 29 properties—an opportunity that demands the attention of investors, developers, shrewd end users or those looking to landbank. You only have to look at the development nearby, or the multi-million-dollar homes on the island, to know this property is a true 'gold mine'.

With low body corporate fees, capital growth guaranteed, and re-development prospects, this property will serve as a terrific investment!

View as advertised or by appointment

Auction: On site | Saturday, 22nd March 2025 at 12:00pm





"Relax & Unwind"



"Cook & Create"



"Your Sanctuary..."



"Bright & Airy"



"Peaceful & Private"



"Life on the Island..."

Surfers Paradise

Capri on Via Roma

Roma Park

Broadbeach

Property Specifications

- Located on the Prestigious Isle of Capri
- Situated in 'Capri Garden Villas'
- On an Approximately 3-Acre Site
- One of Only 29 Residences
- Ideal Low Maintenance Property
- Cathedral Ceilings in Main Living
- Bright & Airy with Several Skylights
- Large Kitchen with Ample Storage
- Open-Plan Living & Dining Area
- Two Generously Proportioned Bedrooms
- Two-Way Bathroom with Bathtub
- Fully Fenced, Private Alfresco Area
- Access to a Large Resort-Style Pool & BBQ Area
- Low Body Corporate Fees
- Air-Conditioning in Main Living & Fans in Bedrooms
Separate Laundry
- Single Lockup Garage with Extra Storage Space
- Additional Visitor Parking
- Opportunity to Modernise & Add Value
- Prime Investment Property Poised for Capital Growth & Long Term Prospects for Development
- 3-Mins to Capri on Via Roma & Sorrento Shops
- 5-Mins to World Class Beaches

Visit 19-111SalernoSt.com



Seller's Insights

"You will find this location so convenient, literally adding to your quality of life. Being midway between the upmarket Capri on Via Roma & Sorrento Shopping Village is a game changer."

"By virtue of your position on the Isle of Capri, you'd never be without a tenant! Plus, the low maintenance nature of the property makes it an ideal investment."

"If you're looking to secure your long term financial future, this property is assured of not just capital growth and rental return, but also has terrific development prospects!"

Market Analysis

2/13 Thomas Drive, Surfers Paradise

Price: \$652,000
Traded: 30 Jan 2025
Size: 252m²
2 bed, 1 bath, 1 car



1/111 Salerno Street, Isle of Capri

Price: \$860,000
Traded: 10 Aug 2023
Size: 216m²
3 bed, 2 bath, 2 car



31/26 Elliott Street, Surfers Paradise

Price: \$730,000
Traded: 23 July 2024
Size: 239m²
2 bed, 2 bath, 1 car



54/7 Elliott Street, Surfers Paradise

Price: \$785,000
Traded: 26 Aug 2023
Size: 86m²
3 bed, 2 bath, 2 car

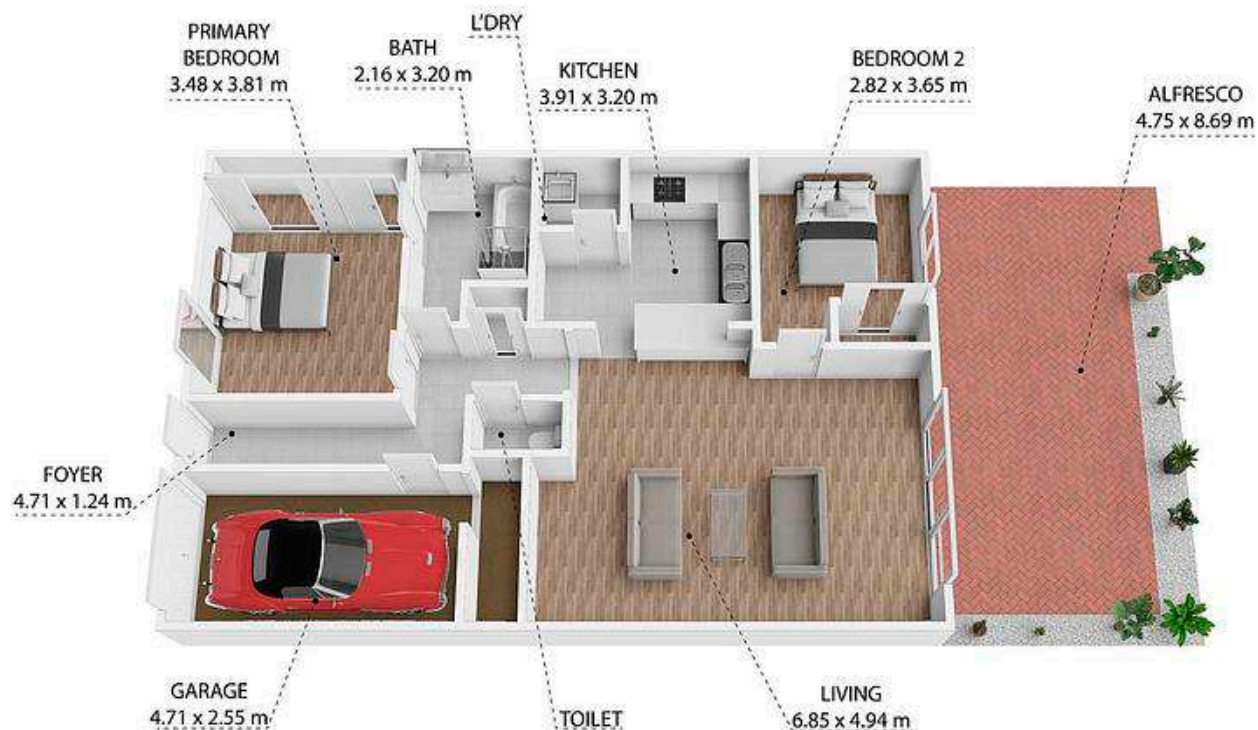


27/103 Salerno Street, Isle of Capri

Price: \$985,000
Traded: 09 Dec 2024
Size: 151m²
3 bed, 2 bath, 2 car



The information contained herein has been obtained through sources deemed reliable by M-Motion but cannot be guaranteed for its accuracy. We recommend to the buyer that any information, which is of special interest, should be obtained through independent verification.



19/111 Salerno Street, Surfers Paradise, QLD, 4217
TOTAL APPROX. FLOOR AREA 106 SQM

While every attempt has been made to ensure the accuracy of the floor plan contained here, measurements of doors, windows, rooms and any other items are approximate and no responsibility is taken for any error, omission, or misstatement. This plan is for illustrative purposes only and should be used as such by any prospective purchaser.

19/111 Salerno Street, Surfers Paradise

All dimensions are approximate; they are subject to errors and inaccuracies and no liability will be accepted. Plans are shown for marketing purposes only.

2 1 1



M-MOTION
'real estate's new generation'

"Functional Flow"

Visit 19-111SalernoSt.com

Suburb Profile

Isle of Capri is a luxurious, sought-after enclave on the Gold Coast, blending serene waterfront living with urban convenience. Located minutes from Surfers Paradise, Isle of Capri offers privacy, sophistication and easy access to high-end amenities.

At the heart of the suburb is Capri on Via Roma, a chic precinct with boutique shopping, gourmet cafes, and fine dining. Here residents enjoy a vibrant, relaxed lifestyle amid scenic parks, walking paths, and waterways perfect for boating and outdoor leisure.

Ideal for families, Isle of Capri is close to leading schools such as The Southport School (TSS) and St Hilda's School, both known for their academic and extracurricular excellence. The suburb's prime location also means seamless connectivity, with public transport links including the G:link tram network and quick access to the Pacific Motorway, making commutes to Broadbeach, Southport and Brisbane convenient.

Known for its prestigious real estate market, Isle of Capri features spacious, architecturally impressive homes, many with private pontoons and expansive waterfront views. Its high demand ensures solid property values, making it a premium choice for investors and homebuyers seeking a blend of luxury and tranquility on the Gold Coast.

Isle of Capri's community is close-knit yet sophisticated, with gatherings and events at Capri on Via Roma fostering a friendly atmosphere. This exclusive suburb offers a unique balance of scenic beauty, modern convenience, and a strong sense of belonging, creating a truly distinguished lifestyle. For those seeking a prestigious coastal retreat with top-tier amenities, Isle of Capri stands as a prime choice.





M-MOTION

'Real Estate's New Generation'



MICHAEL MAHON

M 0414 275 272

E michael@m-motion.com.au

1300MYSUCCESS

LAUREN MAHON, LL.B.

M 0491 111 939

E lauren.mahon@m-motion.com.au

m-motion.com.au