



Re-live and share your viewing experience in HD
Visit: 25Inga.com



"WORLD-CLASS LIFESTYLE"



12  12  4   1086m²



Property Overview

"WORLD-CLASS LIFESTYLE"

Magnificently designed, magnificently built. These two trophy homes provide a first-class lifestyle with attributes that create a property that truly is world-class.

A commanding point position and over one quarter acre of land sets the scene for two homes that will impress the most discerning of buyers. Situated in a hidden enclave of Surfers Paradise and protected within the junction of one of the finest waterways on the Gold Coast, main-river is just moments away. Capturing remarkable wide-water and city skyline views, you can see your future belongs right here.

Sprawling over three levels, and built to the highest of standards, you will immediately feel at home in whichever of the two residences you choose. Boasting six bedrooms on either side; five ensuite and all private. The master suite occupies the entire upper level and flaunts a boutique style walk-in wardrobe, lavish ensuite adorned with the finest finishes, separate sitting area and expansive balcony.

You are minutes to esteemed schools such as TSS and St Hildas. Located within a stone's throw to world class shopping, dining, entertainment and with HOTA next door, this is Gold Coast living at its very finest.

These bespoke homes exude quality, and flaunt their size with class and distinction. With the opportunity to acquire both homes, this is an acquisition that will serve your future whilst ensuring you live life to the full today...

View as advertised or by appointment
Auction: On site | Saturday, 9th Dec 2023 at 11:00am



"Welcome Home"



"Relax & Unwind"





"Your New Lifestyle"

"Point Position"



Property Specifications

- Two Trophy Homes on an Ideal Waterfront Block
- Over One Quarter Acre of Land (1,086m²)
- Wide Water with Direct Access to Main River
- Stunning City Skyline Views with North South Outlook
- Point Position at the Top of a Quiet Cul-De-Sac
- Newly Built in 2022 to the Highest Standard
- Sprawling Over 3 Levels with a Residential Lift
- Low Maintenance Property with Gated Security Entrance
- Bright, Airy Home with High Ceilings
- Natural Stone Travertine Tiles Throughout
- State of the Art Kitchen with Vanilla Silver Marble
- Several Open Plan Indoor Living Spaces
- Large Outdoor Courtyard, Pool and Direct Beach Access
- Each Property Boasts 6 Bedrooms, 5 which are Ensuited
- Master Suite Occupies Entire Top Level. Walk-In Wardrobe, Ensuite, Separate Sitting Area and Balcony
- Large Walk-In Robe with Bespoke Cabinetry
- Several Balconies Capitalising on Outlook
- 6 Lavish Bathrooms with Up Market Tapware
- Quality Climate Control, Smart Lighting, Intercom and Security Systems Installed
- Both Homes have Double Lockup Garages
- Minutes to Renowned Schools: TSS and St Hildas

Visit www.25Inga.com



Seller's Insights

The design of these two properties demanded a position with wide-water and expansive wrap-around views. We also wanted a quiet street with no through traffic. It took a while but we found our dream position at the top of a cul-de-sac. Once you're living here you will truly appreciate this position for what it is.

Everyone that visits this home is immediately impressed! If you like to entertain, you will love the integration of your internal living with your massive alfresco dining, pool and private beach. Your weekends will feel like a mini vacation!

Waking up in this home will be your daily reminder of how fortunate and blessed you are. You will start your day with positivity, gratitude and enthusiasm... It's literally impossible not to!

Market Analysis

11A & 11B Yunga Court, Broadbeach Waters

Price: \$6,200,000
Traded: 7 Jul 2023
Size: 800m²
10 bed, 8 bath, 4 car



18 Etna Street, Surfers Paradise

Price: \$8,100,000
Traded: 20 Sept 2023
Size: 617m²
5 bed, 5 bath, 7 car



14 Seafarer Court, Surfers Paradise

Price: \$4,325,000
Traded: 29 Jan 2023
Size: 680m²
5 bed, 5 bath, 3 car



14 Admiralty Drive, Surfers Paradise

Price: \$8,700,000
Traded: 10 Aug 2023
Size: 678m²
5 bed, 7 bath, 8 car

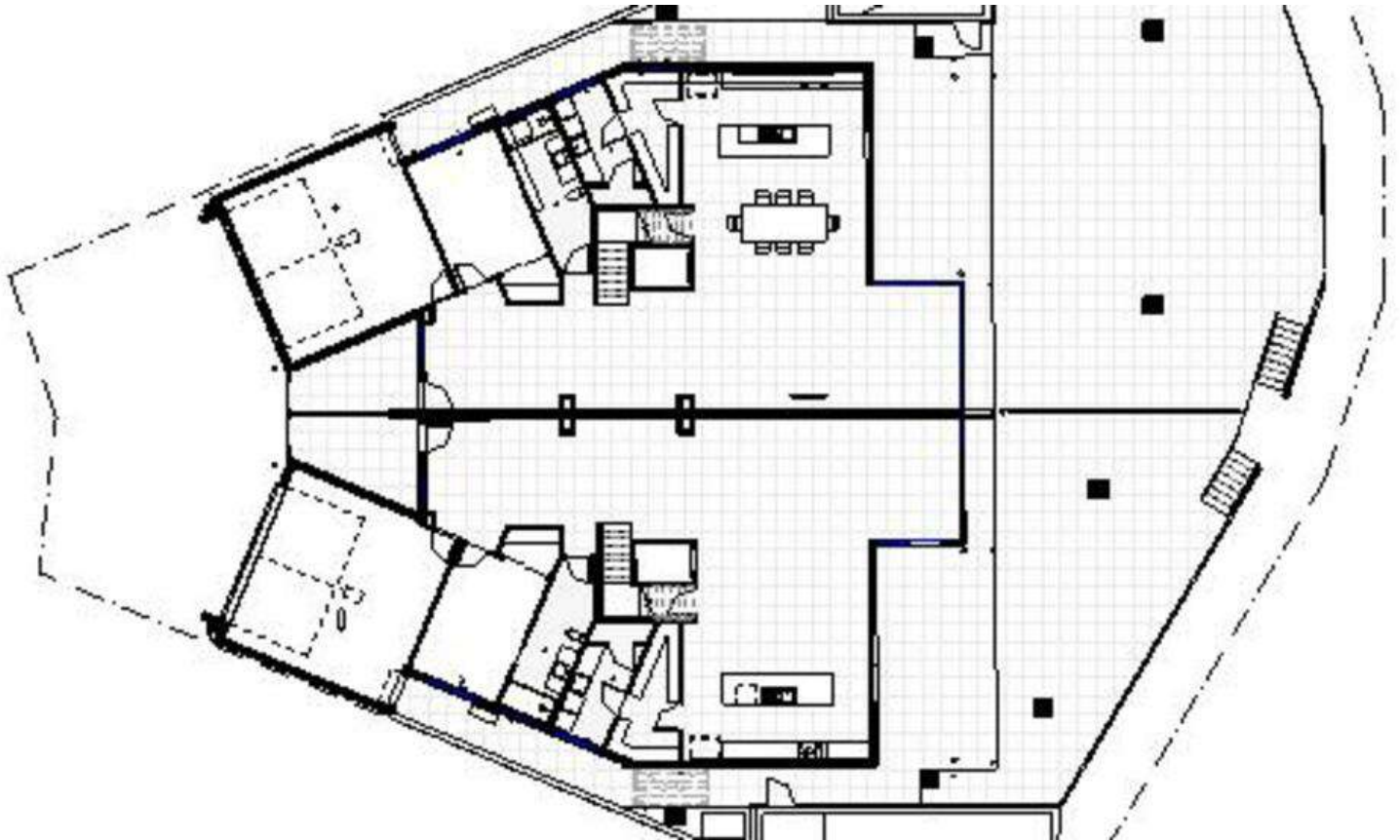


60 Admiralty Drive, Surfers Paradise

Price: \$13,600,000
Traded: 13 Jun 2022
Size: 1094m²
5 bed, 5 bath, 12 car



The information contained herein has been obtained through sources deemed reliable by M-Motion but cannot be guaranteed for its accuracy. We recommend to the buyer that any information, which is of special interest, should be obtained through independent verification.



"PURCHASE ONE OR BUY BOTH"

Visit www.25Inga.com

Suburb Profile

Surfers Paradise is a vibrant coastal suburb, recognised worldwide for its stunning beaches and bustling atmosphere. Surfers Paradise is a popular destination for tourists and locals alike.

The long stretch of golden sand, combined with the inviting turquoise waters of the Pacific Ocean, makes Surfers Paradise a haven for surfers, beachgoers and all water sports enthusiasts.

While Surfers Paradise is known for its spirited nightlife, the wider neighbourhood is home to countless parks, playgrounds and wildlife.

Characterised by its impressive city skyline; there is no shortage of quality shopping, dining and entertainment on offer. Boasting a plethora of boutiques, shopping centres, restaurants, cafes and located next door to the ever so popular Home of the Arts Sunday Markets; this truly is a lifestyle suburb.

Located within a stones throw to leading private schools, TSS and St Hildas, and minutes to a variety of other private and state schools. Serviced by state of the art public transport options including, buses and trams, you are minutes away from all the Gold Coast has to offer.

Surfers Paradise offers an unbeatable lifestyle, and to buy here would be a solid investment in your family's future!





'Real Estate's New Generation'



MICHAEL MAHON

M 0414 275 272

E Michael@m-motion.com.au

1300MYSUCCESS

LAUREN MAHON

M 0491 111 939

E lauren.mahon@m-motion.com.au

m-motion.com.au