



M-MOTION

'Real Estate's New Generation'



Re-live and share your viewing experience in HD
Visit: Visit 7GrasslandsCrescent.com



'ELEVATED LIVING ...'



612m²

m-motion.com.au

7 Grasslands Crescent, Reedy Creek

Property Overview

Perfectly positioned on an elevated, North-facing block, and surrounded by natural bush reserve, this property provides peace, calm and tranquillity.

This single level home is clean, bright and open. As you enter you are welcomed by beautiful timber floors that flow throughout adding a natural warmth and sense of comfort. Two large open-plan living areas, with high ceilings provide plenty of space for the growing family.

The heart of the home is a stunning gourmet kitchen, flaunting Caesarstone benchtops, gas cooking and a stylish glass splashback. Four spacious bedrooms cater to the larger family and the master boasts an elegant ensuite, walk-in-robe and air conditioning.

Spanning 3-metres, bi-fold doors open to integrate a large alfresco entertainment area with the rest of your home. This generous 612m² block is designed to be low maintenance, providing more time to enjoy what really matters.

Set high above sea level, this home captures those fresh ocean breezes. With local shops, great schools and M1 access moments away, this property is a mere 10-minutes from Burleigh Heads beach and 20-minutes from Gold Coast Airport.

The potential for growth is simply unmatched.

View as advertised or by appointment
Auction: On site | Saturday, 27 Nov 2021 at 11:00am



"Family Time"



"Pure Comfort"



"Flavour, Fun & Flair"



"Entertain & Enjoy"



"Alfresco Dining"

'Great Outdoors'





Property Specifications

- 4 Bedrooms, 2 Bathrooms
- Double Lock Up Garage
- North Facing Block
- Elevated Position 612m2
- Built in 2009
- Two Separate Living Areas
- Timber Flooring
- Gourmet Kitchen with Gas Appliances
- High Ceilings
- 3m Bifold Doors
- Front and Rear Decks
- Alfresco Living
- Approximately 7 mins to Robina Town Centre
- Approximately 3 mins to the M1
- Approximately 15 mins to Burleigh Heads Beach
- Approximately 20 mins to Gold Coast Airport
- Approximately 3 mins to Local Shops
- Close distance to some of the best Schools
- Air Conditioning in Main Living and Master bedrooms
- Beautiful Community
- Perfect Size Property to Grow



Seller's Insights

"Grasslands Crescent is the perfect blend of city convenience with the relaxed feel of natural bush, trees and wildlife"

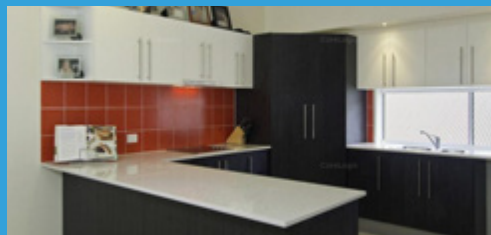
"You will really appreciate the privacy, the space and the flow. It works particularly well with teenage children"

"Being a North-facing block, the house is always light and bright; being elevated is also catches those beautiful summer b

Market Analysis

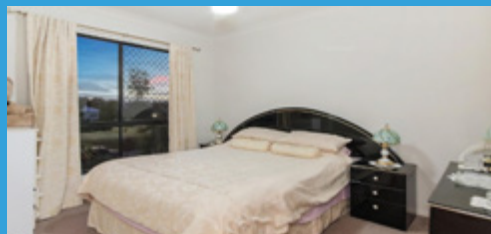
23 Grasslands Crescent, Reedy Creek

Price: \$1,060,000
Traded: 26 Aug 2021
Size: 685m²
4 bed, 2 bath, 2 car



16 Barden Ridge Road, Reedy Creek

Price: \$1,050,000
Traded: 22 Jun 2021
Size: 713m²
5 bed, 3 bath, 2 car



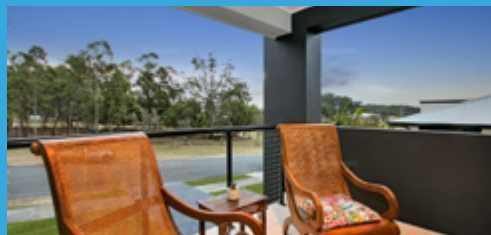
46 Gordonia Drive, Reedy Creek

Price: \$956,000
Traded: 10 Jun 2021
Size: 735m²
4 bed, 2 bath, 2 car



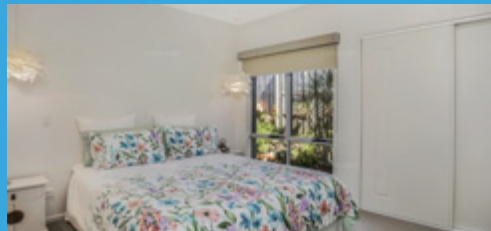
15 York Creek Crescent, Reedy Creek

Price: \$1,275,000
Traded: 28 Oct 2021
Size: 712m²
4 bed, 2 bath, 2 car



20 Barden Ridge Road, Reedy Creek

Price: \$1,420,000
Traded: 15 Oct 2021
Size: 713m²
4 bed, 3 bath, 2 car



The information contained herein has been obtained through sources deemed reliable by M-Motion but cannot be guaranteed for its accuracy. We recommend to the buyer that any information, which is of special interest, should be obtained through independent verification.



M-MOTION
'real estate's new generation'



The floor plan is not to scale; measurements are indicative and in metres. All features included in this 3D plan are for inspiration purposes only. This is not an exact replica of the property or the position of exterior elements. Plans should not be relied on. Interested parties should make and rely on their own enquiries.

"Grow with the flow"

Visit 7GrasslandsCrescent.com

Suburb Profile

Family-friendly Reedy Creek is the Gold Coast's best kept secret with a close proximity to everything, yet peacefully surrounded by bushland, nature parks and native wildlife.

The peak of perfection being 'The Observatory'; a prestigious and highly sought-after community within Reedy Creek known for its magnificent views of the coastline and quality modern homes.

Quiet and conveniently located within just minutes of everything the coast has to offer, locals appreciate having the 'best of both worlds'.

This prime location is only minutes from the beach, shopping centres, boutiques, cafes, restaurants and nightlife. The area is close to multiple forms of public transport, including the Coolangatta Airport- just a short drive down the M1 Motorway. Boasting some of Queensland's finest schools, the suburb is perfect for growing families and nature lovers. Reedy Creek really has it all!





M-MOTION

'Real Estate's New Generation'



MICHAEL MAHON

M 0414 275 272

E Michael@m-motion.com.au

1300MYSUCCESS

AMANDA BLAIR

M 0450 090 023

E amanda.blair@m-motion.com.au

m-motion.com.au